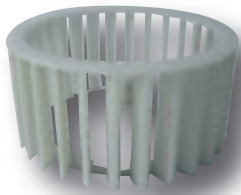
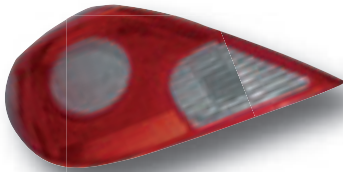


# STEREOLITHOGRAPHY



## Manufacturing process

The model is reproduced layer by layer (thickness 0.1 or 0.15 mm), starting from a 3D file, by polymerisation of a photosensitive epoxy resin using an ultraviolet laser. The virtual image is thus transformed into a physical prototype in a few hours.

## The objective :

To visualize, control and validate the forms, to create the models for silicon or RIM tools.

## Our strong points :

Axis produces a high quality finish which will replicate your production parts, especially for painted, transparent and metallic pieces.

## Delay :

Two to five working days according to size and finish.

## Means of production and mechanical properties

Machines	Materials	Elongation at break %	Flexural modulus	Tensile strength	Thermal	Density	Colour	Obs.	Application
SLA 250-50 250 mm cube	Somos White 14 120	8 %	2 460 Mpa	47 Mpa	53° C	1,10	Opaque white	Layers of 0,10 to 0,15 mm	Near ABS
SLA 250-50 250 mm cube	Somos Nanotools	1,2 %	9 240 Mpa	72 Mpa	257° C	1,60	Opaque beige	Layers of 0,10 mm	Parts with strong mechanical, aerodynamic, optics, thermal requests (metallization)
SLA 5000 500 x 500 x 590 mm	Somos Watershed 11 120	11 %	2 040 Mpa	47 Mpa	40° C	1,12	Transparent cristal	Couches de 0,10 à 0,15 mm	Transparent cristal and coloured parts ABS/PC/PMMA
SLA 5000 500 x 50 x 590 mm	Somos Protogen 18 120	16 %	2130 Mpa	70 Mpa	75° C	1,13	Blanc opaque	Couches de 0,10 à 0,15 mm	Structural part hardly possible to build in laser sintering process

